

## Official 2014 Latest Microsoft 70-412 Exam Dump Free Download(221-230)!

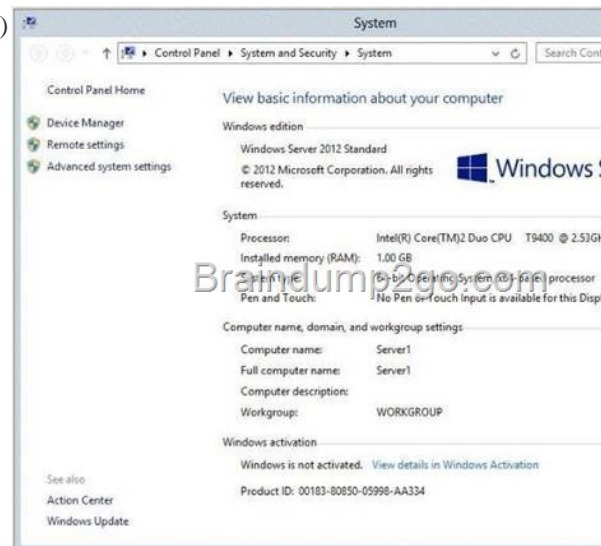
QUESTION 221 Your network contains an Active Directory domain named contoso.com. The domain contains two member servers named Server1 and Server2. All servers run Windows Server 2012 R2. Server1 and Server2 have the Failover Clustering feature installed. The servers are configured as nodes in a failover cluster named Cluster1. Cluster1 contains a file server role named FS1 and a generic service role named SVC1. Server1 is the preferred node for FS1. Server2 is the preferred node for SVC1. You plan to run a disk maintenance tool on the physical disk used by FS1. You need to ensure that running the disk maintenance tool does not cause a failover to occur. What should you do before you run the tool? A. Run cluster.exe and specify the pause parameter. B. Run cluster.exe and specify the offline parameter. C. Run Suspend-ClusterResource D. Run Suspend-ClusterNode. Answer: B

QUESTION 222 Your network contains an Active Directory domain named contoso.com. The domain contains two member servers named Server1 and Server2. All servers run Windows Server 2012 R2. Server1 and Server2 have the Failover Clustering feature installed. The servers are configured as nodes in a failover cluster named Cluster1. Cluster1 contains a Clustered Shared Volume (CSV). A developer creates an Application named App1. App1 is NOT a cluster-aware Application. App1 stores data in the file system. You need to ensure that App1 runs in Cluster1. The solution must minimize development effort. Which cmdlet should you run? A. Add-ClusterGenericApplicationRole B. Add-ClusterGenericServiceRole C. Add-ClusterServerRole D. Add-ClusterScaleOutFileServerRole Answer: A

QUESTION 223 Your network contains an Active Directory domain named contoso.com. The domain contains a server named Server1 that runs Windows Server 2012 R2. Server1 is an enterprise root certification authority (CA) for contoso.com. Your user account is assigned the certificate manager role and the auditor role on the contoso.com CA. Your account is a member of the local Administrators group on Server1. You enable CA role separation on Server1. You need to ensure that you can manage the certificates on the CA. What should you do? A. Remove your user account from the local Administrators group. B. Assign the CA administrator role to your user account. C. Assign your user account the Bypass traverse checking user right. D. Remove your user account from the Manage auditing and security log user right. Answer: D

QUESTION 224 Your network contains an Active Directory domain named contoso.com. The domain contains a server named Server1 that runs Windows Server 2012 R2 and has the DHCP Server server role installed. An administrator installs the IP Address Management (IPAM) Server feature on a server named Server2. The administrator configures IPAM by using Group Policy based provisioning and starts server discovery. You plan to create Group Policies for IPAM provisioning. You need to identify which Group Policy object (GPO) name prefix must be used for IPAM Group Policies. What should you do on Server2? A. From Server Manager, review the IPAM overview. B. Run the ipamgc.exe tool. C. From Task Scheduler, review the IPAM tasks. D. Run the Get-IPAMConfiguration cmdlet. Answer: A

QUESTION 225 Your network contains an Active Directory domain named contoso.com. The domain contains a server named Server1 that runs Windows Server 2012 R2. The system properties of Server1 are shown in the exhibit. (Click the Exhibit button.)



You need to configure Server1 as an enterprise subordinate certification authority (CA). What should you do first? A. Add RAM to the server. B. Set the Startup Type of the Certificate Propagation service to Automatic. C. Install the Certification Authority Web Enrollment role service. D. Join Server1 to the contoso.com domain. Answer: D

QUESTION 226 Drag and Drop Question Your network contains an Active Directory domain named contoso.com. The domain contains four member servers named Server1,

Server2, Server3, and Server4. Server1 and Server2 run Windows Server 2008 R2. Server1 and Server2 have the Hyper-V server role and the Failover Clustering feature installed. Failover Clustering is configured to provide highly available virtual machines by using a cluster named Cluster1. Cluster1 hosts 10 virtual machines. Server3 and Server4 run Windows Server 2012 R2. You install the Hyper-V server role and the Failover Clustering feature on Server3 and Server4. You create a cluster named Cluster2. You need to migrate cluster resources from Cluster1 to Cluster2. The solution must minimize downtime on the virtual machines. Which five actions should you perform? To answer, move the appropriate five actions from the list of actions to the answer area and arrange them in the correct order.

Actions	Answer Area
From Failover Cluster Manager in Cluster1, run the Migrate a Cluster Wizard.	
From Failover Cluster Manager in Cluster2, run the Migrate a Cluster Wizard.	
Unmask the shared storage to present the storage to Cluster 2.	
Shut down all of the virtual machines in Cluster1.	
Mask the shared storage to prevent the storage from being accessed by Cluster1.	
Start the virtual machines in Cluster2.	
Start the virtual machines in Cluster1.	
Shut down all of the virtual machines in Cluster1.	

Answer:

Actions	Answer Area
From Failover Cluster Manager in Cluster1, run the Migrate a Cluster Wizard.	Shut down all of the virtual machines in Cluster1.
From Failover Cluster Manager in Cluster2, run the Migrate a Cluster Wizard.	Unmask the shared storage to present the storage to Cluster 2.
Unmask the shared storage to present the storage to Cluster 2.	Mask the shared storage to prevent the storage from being accessed by Cluster1.
Shut down all of the virtual machines in Cluster1.	Start the virtual machines in Cluster2.
Mask the shared storage to prevent the storage from being accessed by Cluster1.	
Start the virtual machines in Cluster2.	
Start the virtual machines in Cluster1.	
Shut down all of the virtual machines in Cluster1.	From Failover Cluster Manager in Cluster1, run the Migrate a Cluster Wizard.

] Explanation: Migrate a Cluster Wizard Box 1: Shut down all of the virtual machines in Cluster1. Box 2: Unmask the shared storage to present the storage to Cluster2. Box 3: Mask the shared storage to prevent the storage from being accessed by Cluster1. Box 4: Start the virtual machines in Cluster2. Box 5: From the Failover Cluster Manager in Cluster1, run the Migrate a Cluster Wizard.

Note: \* The new cluster roles are always created offline - when VMs and users are ready, the following steps should be used during a maintenance window: i. The source VMs should be shut down and turned off. ii. The source cluster CSV volumes that have been migrated should be off-lined. iii. The storage that is common to both clusters (LUNS) should be masked (hidden) from the source cluster, to prevent accidental usage by both clusters. iv. The storage that is common to both clusters (LUNS) should be presented to the new cluster. v. The CSV volumes on the target cluster should be on-lined. vi. The VMs on the target cluster should be on-lined. vii. VMs are migrated and ready for use! \* Now that the target cluster has been pre-staged, use the following steps during a maintenance window to cut over to the new Windows Server 2012 R2 cluster: 1. Shutdown all VMs on the source Windows Server 2008 R2 cluster that have been migrated. 2. Configure the storage: a. Unmask the common shared storage (LUNs) so that they are not presented to the Windows Server 2008 R2source cluster Note: Data could become corrupt if they are presented to multiple clusters at the same time. b. Mask the common shared storage (LUNs) to the Windows Server 2012 R2 target cluster. QUESTION 227 Your network contains an Active Directory domain named contoso.com. The domain contains two member servers named Server1 and Server2. All servers run Windows Server 2012 R2. Server1 and Server2 have the Failover Clustering feature installed. The servers are configured as nodes in a failover cluster named Cluster1. Cluster1 has access to four physical disks. The disks are configured as shown in the following table.

Disk name	Disk interface
Disk1	iSCSI
Disk2	FC
Disk3	USB
Disk4	SATA

You need to identify which disk can be added to a Clustered Storage Space in Cluster1. Which disk should you identify? A. Disk1 B. Disk2 C. Disk3 D. Disk4 Answer: B QUESTION 228 You have a server named Server1 that runs Windows Server 2012 R2. Server1 has the File Server Resource Manager role service installed. You attempt to delete a classification property and you receive the error message as shown in the exhibit. (Click the Exhibit button.)



You need to delete the is Confidential classification property. What should you do? A. Delete the classification rule that is assigned the isConfidential classification property. B. Disable the classification rule that is assigned the isConfidential classification property. C. Set files that have an isConfidential classification property value of Yes to No. D. Clear the isConfidential classification property value of all files. Answer: A QUESTION 229 You have a server named Server1 that runs Windows Server 2012 R2. Windows Server 2012 R2 is installed on volume C. You need to ensure that Safe Mode with Command Prompt loads the next time Server1 restarts. Which tool should you use? A. The Restart-Server cmdlet B. The Bootcfg command C. The Restart-Computer cmdlet D. The Bcdedit command Answer: D QUESTION 230 You have a failover cluster named Cluster1 that contains four nodes. All of the nodes run Windows Server 2012 R2. You need to schedule the installation of Windows updates on the cluster nodes. Which tool should you use? A. The Wusa command B. The Invoke-CauScan cmdlet C. The Add-CauClusterRole cmdlet D. The Wuauclt command Answer: C Passing Microsoft 70-412 Exam successfully in a short time! Just using Braindump2go's Latest Microsoft 70-412 Dump: <http://www.braindump2go.com/70-412.html>